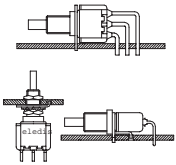


SERIES 5D

- Alternate action pushbutton



CHARACTERISTICS

- Alternate action push button.
- The most comprehensive range of terminations, brackets and bushings.
- Dially phthalate case and stainless steel housing.

SPECIFICATIONS

Contact Rating: **S** (silver) - 6A @ 120 VAC or 28 VDC - **A** (gold) - 0.4 VA max @ 20 VAC or DC max - **G** (gold on silver) - 6A @ 120 VAC or 0.4 VA max (not both)

Electrical life: 50,000 make and break cycles at full load

Contact Resistance: 10 mΩ max. initial @ 2-4 VDC

Insulation Resistance: 1000 MΩ min.

Dielectric Strength: 1500 VRMS @ sea level

Operating Temperature: -30°C to 85°C

MATERIALS

Case: Dially phthalate (DAP), (UL 94-0)

Plunger: Glass filled nylon or glass filled polyester

Bushing: Brass, nickel plated

Housing: Stainless Steel

End contacts & terminals: Copper alloy, with gold plated over nickel plated

Center Contact & Terminal: Copper alloy, with gold plated over nickel plated

HOW TO ORDER



N° OF POLES

- 1 SPDT
- 2 DPDT

ELECTRICAL FUNCTIONS

- 1 on on

TERMINATIONS

- PC PCB
- ST Solder
- U2 U bracket 11.68 mm
- U3 U bracket 16.00 mm
- U4 U bracket 11.68 mm
- U5 U bracket 16.00 mm
- U2S U bracket snap-in 11.68 mm
- U3S U bracket snap-in 16.00 mm
- U4S U bracket snap-in 11.68 mm
- U5S U bracket snap-in 16.00 mm
- U6(∅) U bracket 11.68 mm
- U7(∅) U bracket 16.00 mm
- U8(∅) U bracket 11.68 mm
- U9(∅) U bracket 16.00 mm
- H9 90° horizontal
- V9 90° vertical

CAP + COLOURS OPTIONS

- 1 White
- 2 Black (std)
- 3 Red
- 4(Δ) Orange
- 5(Δ) Yellow
- 6(Δ) Green
- 7(Δ) Blue
- 8(Δ) Brown
- 9(Δ) Gray

BUSHING

- F1 Threaded
- F2 Unthreaded
- F3 Threaded flat
- F4 Unthreaded flat
- F6(∅) Short

CONTACT MATERIAL

- S Silver (std)
- A Gold
- G Gold on silver
- K Tinned gold

CAP OPTIONS

- C1 Diam. 7.7mm
- C2 Diam. 9.35mm
- C5 Sq. 11.7mm
- C7 Diam. 5mm
- C8 Diam. 5mm

SEALING

- E Seal

(∅) Please Enquire
(Δ) Min qty required

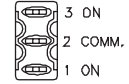
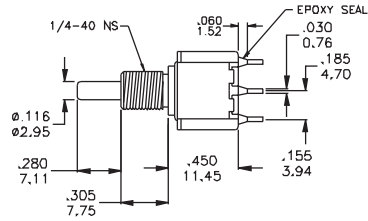
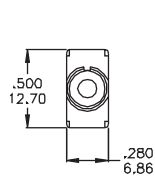


SERIES 5D

ELECTRICAL FUNCTIONS

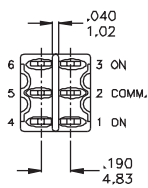
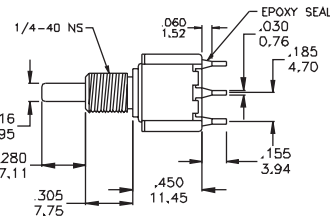
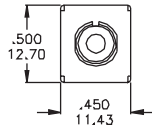
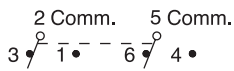
DIMENSIONS

SPDT	Type	
1	on	on
	1 - 2	3 - 2



Part N° shown: **5D11-F1PCSE**

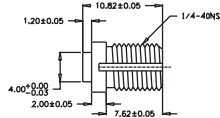
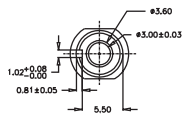
DPDT	Type	
1	on	on
	2-3, 5-6	2-1, 5-4



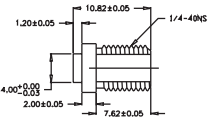
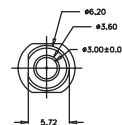
Part N° shown: **5D21-F1PCSE**

BUSHING

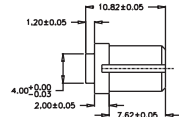
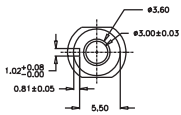
F1 Threaded (std)



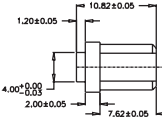
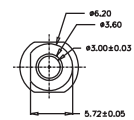
F3 Threaded



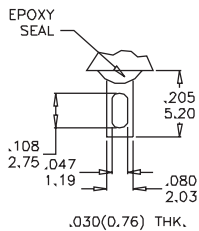
F2 Unthreaded



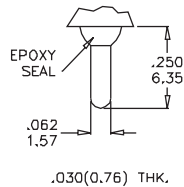
F4 Unthreaded



TERMINATIONS



ST



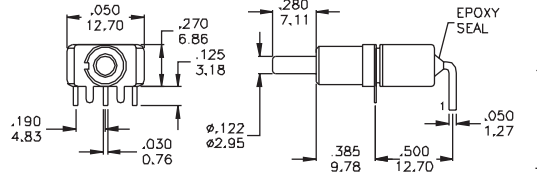
PC

Epoxy seal standard with all models

SERIES 5D

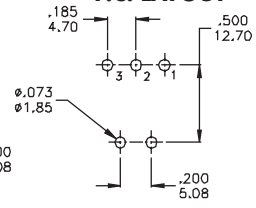
TERMINATIONS

**H9
SPDT**

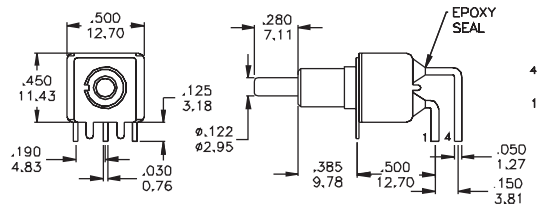


Part N° shown: 5D11-F2H9SE

P.C. LAYOUT

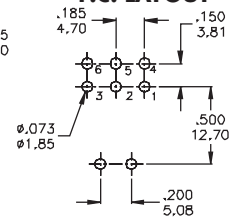


**H9
DPDT**

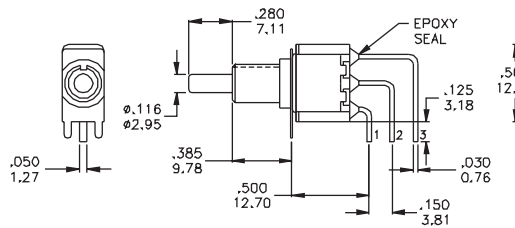


Part N° shown: 5D21-F2H9SE

P.C. LAYOUT

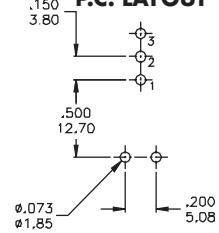


**V9
SPDT**

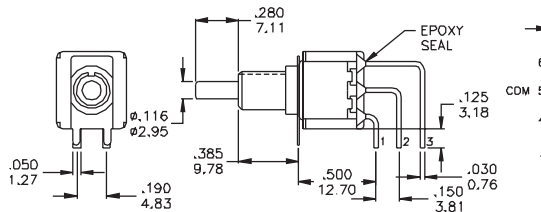


Part N° shown: 5D11-F2V9SE

P.C. LAYOUT

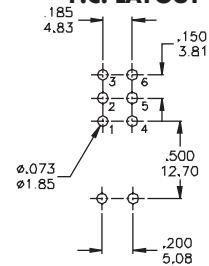


**V9
DPDT**



Part N° shown: 5D21-F2V9SE

P.C. LAYOUT

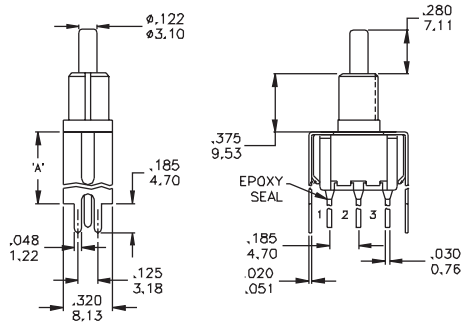




SERIES 5D

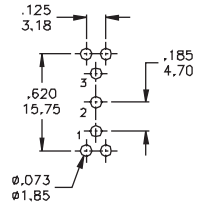
TERMINATIONS

**U2 - U3
SPDT**



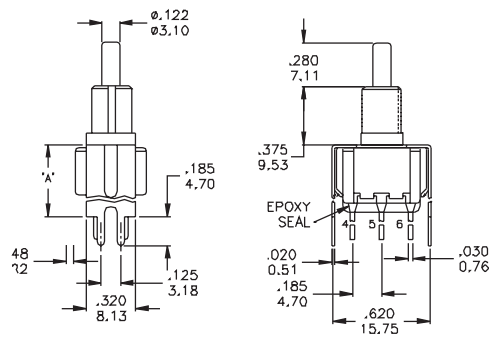
Dim. A	
U2	.460 (11.68)
U3	.630 (16.00)

P.C. LAYOUT



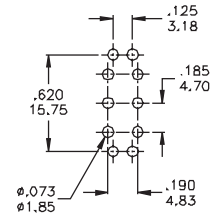
Part N° shown: **5D11-F2U_SE**

**U2 - U3
DPDT**



Dim. A	
U2	.460 (11.68)
U3	.630 (16.00)

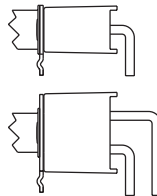
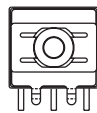
P.C. LAYOUT



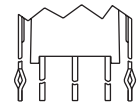
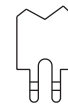
Part N° shown: **5D21-F2U_SE**

Snap-in termination options

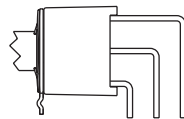
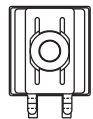
H9S



**U2S
U3S**



V9S



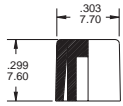
**U4S
U5S**



H9S, V9S, U2S, U3S, U4S, U5S have the same P.C layout but are supplied with snap-in bracket to grip onto the PCB

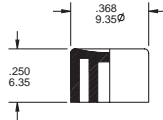
SERIES 5D

CAP ACCESSORIES



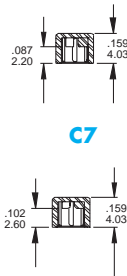
C1

Round intermediate cap



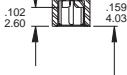
C2

Round regular cap

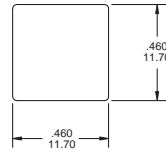


C7

Round small cap



C8



C5

Square cap

CAP - FRAME COLOURS OPTIONS

- | | |
|----------------------|-----------------|
| 1 White | 6Δ Green |
| 2 Black (std) | 7Δ Blue |
| 3 Red | 8Δ Brown |
| 4Δ Orange | 9Δ Gray |
| 5Δ Yellow | |

Part Number _____
 Colour

CONTACT MATERIALS

CONTACT RATINGS

S (std) **Moving Contacts:** coin silver
Terminals: copper alloy, silver plated
Rating: 2 Amps with resistive load @ 250 VAC
 6 Amps with resistive load @ 125 VAC or 28 VDC

A **Moving Contacts:** copper alloy with gold plating over nickel plating
Terminals: copper alloy with gold plating over nickel plating
Rating: 0.4 Volts/Amps max @ 20 Volts max (AC or DC)

K Same as **A**, but with pre-tinned terminals

G **Moving Contacts:** gold plating over silver
End Terminals: gold plating over silver
Center Terminals: gold plating over copper alloy, silver plated
Note: **G** option used for either "high" (2 Amps @ 250 VAC) or "low" (0.4 Volts/Amps max) contact rating (one exclude the other)

PACKAGING

Transparent Trays 15x21x4 cm



Each box contains 100 pcs

MARKING (on products)

The switches are individually marked with the following information:

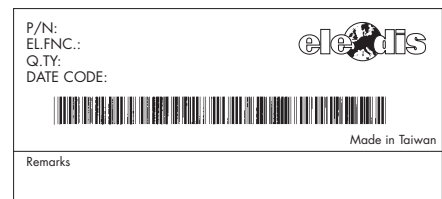
Side 1 TRADE MARK
 SERIES AND MODEL
 DATE CODE

Side 2 RATING
 CONTACTS

Note: Not all information may be available on some products.

LABELLING (on packaging)

The label on each tray gives full information on the products contained.



A Bar code indicating Model, Quantity, Date Code enables easy traceability.