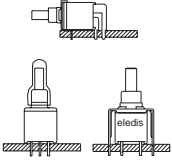


SERIES 6B

- Sealed Sub-miniature pushbutton



AGENCY APPROVALS

IP67

- In conformity with:
- EN 60529: 1991
 - IEC 529: 1989

CHARACTERISTICS

- Tiny and sealed switch suitable for environmentally hard usage.
- Carries up to 3 Amps @ 120 VAC or 28 VDC.

SPECIFICATIONS

Contact Rating: **S** (silver) - 3A @ 120 VAC or 28 VDC - **A** (gold) or **K** (gold/tin-lead) - 0.4 VA max @ 20 VAC or DC max

Electrical life: 50,000 make and break cycles at full load

Contact Resistance: 20 mΩ max. initial @ 2-4 VDC - 100 mA, for both silver and gold plated contacts

Insulation Resistance: 1000 MΩ min.

Dielectric Strength: 1500 VRMS @ sea level

Operating Temperature: -30°C to 85°C

MATERIALS

Case & bushing: Glass filled nylon 6/6, flame retardant, heat stabilized (UL94V-0)

Plunger: Thermoplastic polyester (UL94V-0) with internal o-ring seal

Switch support: Brass, tin plated

Terminal seal: Epoxy

HOW TO ORDER



ELECTRICAL FUNCTIONS

11	on	(on)
52	off	(on)

TERMINATIONS

PC	PCB
H9	90° horizontal
H9S	90° horizontal snap-in
V9	90° vertical
V9S	90° vertical snap-in
U2	U bracket 11.68 mm
U2S	U bracket snap-in 11.68 mm

ACTUATORS

none	Plunger 5.46
FP	Flush Type

CONTACT MATERIAL

S	Silver
A	Gold
K (Δ)	Gold/Tin-Lead
G	Gold over Silver

CAP COLOURS OPTIONS

1 (Δ)	White
2	Black (std)
3	Red
4 (Δ)	Orange
5 (Δ)	Yellow
6 (Δ)	Green
7 (Δ)	Blue
8 (Δ)	Brown
9 (Δ)	Gray

SEALING

E	Seal
---	------

CAP OPTIONS

C3	Diam. 5.08mm
C4	Diam. 7.62mm

(Δ) Min qty required

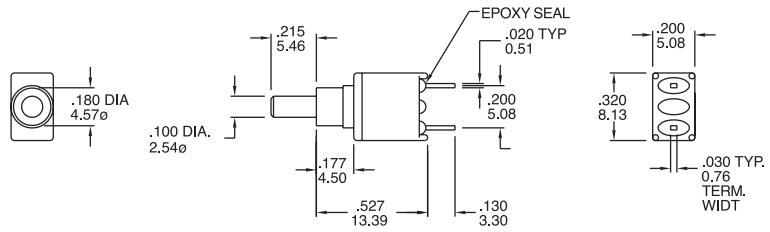


SERIES 6B

ELECTRICAL FUNCTIONS

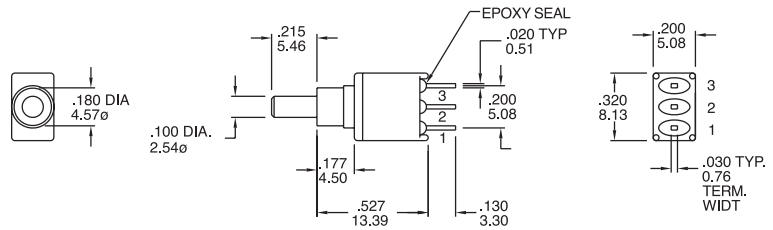
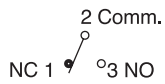
DIMENSIONS

SPST	Type
52	off (on)



Part N° shown: 6B52-PCAE

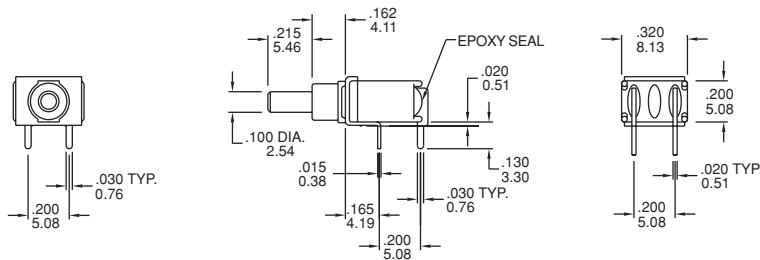
SPDT	Type
11	on (on)
2 - 1	2 - 3



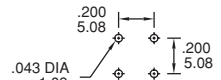
Part N° shown: 6B11-PCAE

TERMINATIONS

**H9
SPST**

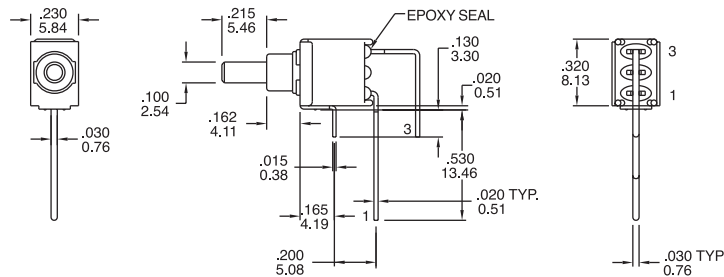


P.C. LAYOUT

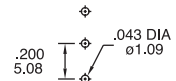


Part N° shown: 6B52-H9AE

**V9
SPST**



P.C. LAYOUT



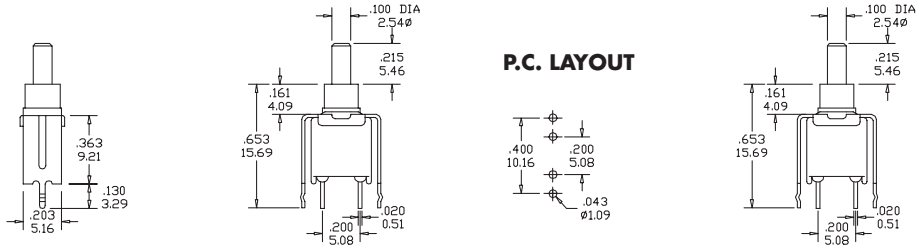
Part N° shown: 6B52-V9AE

SERIES 6B

TERMINATIONS

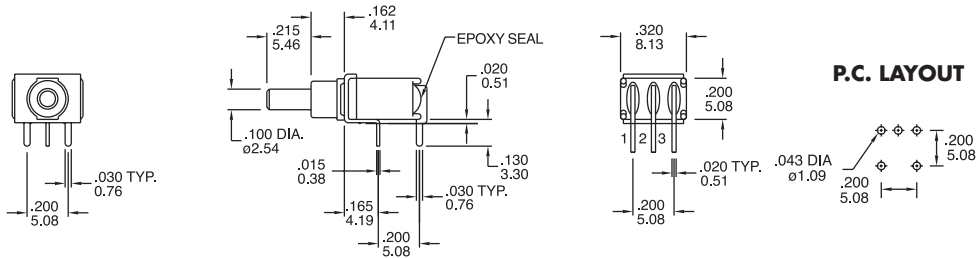
PUSH BUTTONS

**U2
SPST**



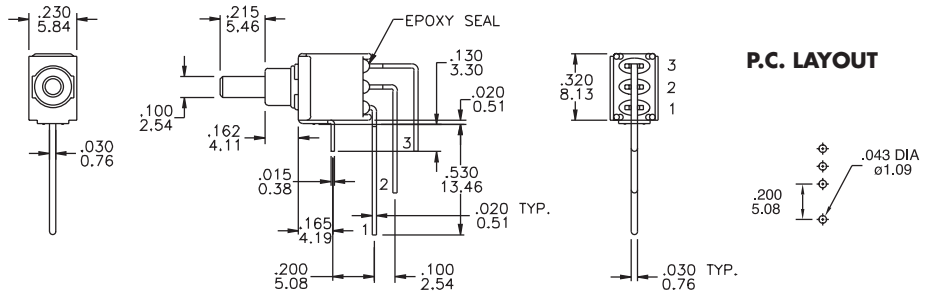
Part N° shown: 6B52-U2AE

**H9
SPDT**



Part N° shown: 6B11-H9AE

**V9
SPDT**



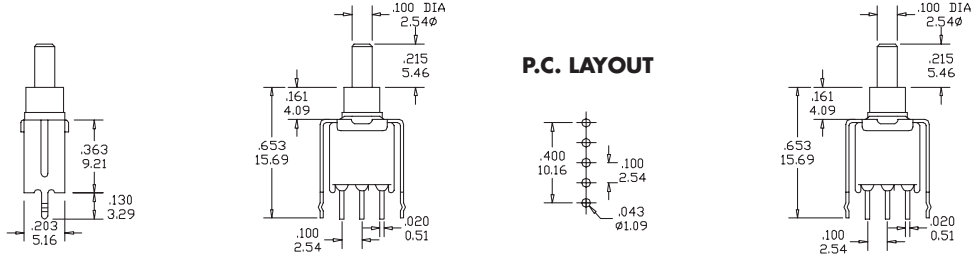
Part N° shown: 6B11-V9AE



SERIES 6B

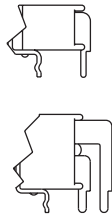
TERMINATIONS

**U2
SPDT**

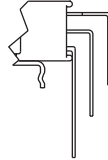


Part N° shown: 6B11-U2AE

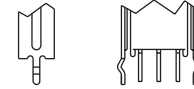
H9S



V9S

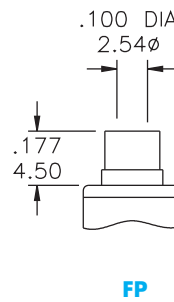
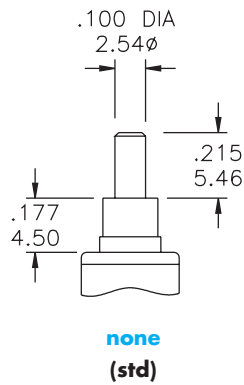


U2S



HS9, V9S, US have the same P.C. Mounting but with snap-in bracket.

PLUNGER



SERIES 6B

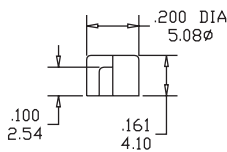
CONTACT MATERIALS

CONTACT RATINGS

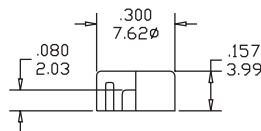
- S** **Moving Contacts:** coin silver, silver plated
Center Contacts and all Terminals: brass, silver plated
Rating: 3 Amps with resistive load @ 120 VAC or 28 VDC
 1.5 Amps with resistive load @ 250 VAC
- A** **Moving Contacts:** brass, gold plated over nickel plate
Terminals: brass, gold plated over nickel plate
Rating: 0.4 Volts/Amps max @ 20 Volts max (AC or DC)
- G** **Moving Contacts:** gold plating over silver
End Terminals: gold plating over silver
Center Terminals: gold plating over copper alloy, silver plated

PUSH BUTTONS

CAPS OPTIONS



C3



C4

CAP + FRAME COLOURS OPTIONS

- 1 (Δ) White
- 2 Black (std)
- 3 Red
- 4 (Δ) Orange
- 5 (Δ) Yellow
- 6 (Δ) Green
- 7 (Δ) Blue
- 8 (Δ) Brown
- 9 (Δ) Gray

Part Number

Colour

(Δ) Min qty required

PACKAGING

MARKING (on products)

LABELLING (on packaging)

The switches are individually marked with the following information:

- Side 1** TRADE MARK
SERIES AND MODEL
DATE CODE
- Side 2** RATING
CONTACTS

Note: Not all information may be available on some products.

The label on each tray gives full information on the products contained.

P/N: EL.FNC.: Q.TY: DATE CODE:	
<small>Made in Taiwan</small>	
Remarks	

A Bar code indicating Model, Quantity, Date Code enables easy traceability.