	NO.	A30942 A1012021	PAGE 1/3
7D11 SERIES SPECIFICATION	Edition	3	

1. FEATURES

- 1-1. The distance of 2 adjacent pins or stacked devices is 2.54 mm pitch.
- 1-2. All plastics are UL 94V-O grade fire retardant.

2. APPLICATIONS:

- 2-1. Measuring point change over switch
- 2-2. Service switch
- 2-3. Control for consumer devices


3. ELECTRICAL CHARACTERISTICS

- 3-1. Contact rating: 0.2A, 24V; 0.5A, 12V
- 3-2. Minimum contact rating: 1mA, 10mV
- 3-3. Contact resistance:

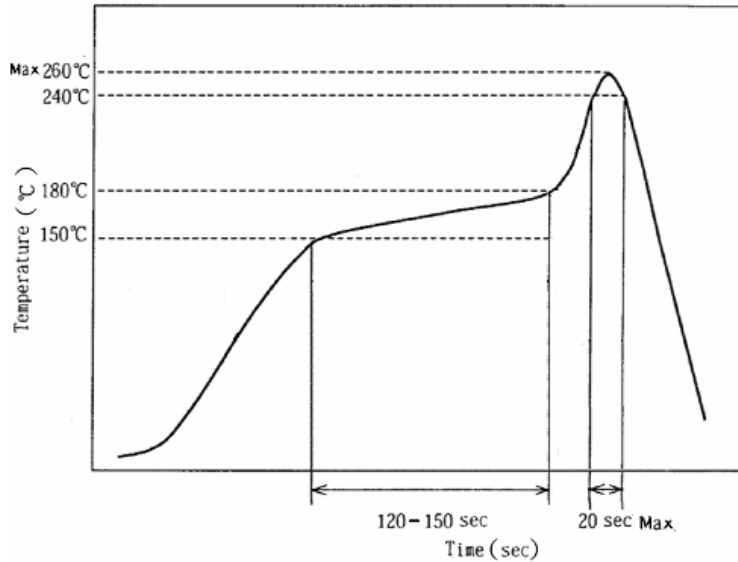
Initial	50m	Max.
After Life Test	100m	Max.
- 3-4. Dielectric strength: 2mA, 500VDC for 60 seconds
- 3-5. Capacitance: 1.5pF Max.
- 3-6. Insulation resistance: 10000M Min. under 500VDC
- 3-7. Operating life at Max. power: 5000 cycles

4. GENERAL CHARACTERISTICS

- 4-1. Storage temperature range: -40 ~ 85
- 4-2. Operating temperature range: -25 ~ 70
- 4-3. Resistance to Soldering heat: 260 ±3°C for 3 sec Max.(Standard version)
260 ±3°C for 5 sec Max.(Tropical version)

	NO.	A30942 A1012021	PAGE 2/3
7D11 SERIES SPECIFICATION	Edition	3	

4-4. Reflow Soldering heat for SMT type(reference only)



4-5. Vibration: normal operation at 10 Hz to 60 Hz, 1.5mm movement

4-6. Saltspray: 35°C, 5% for 24 hours

4-7. Operation force : 800g Max.


5. PACKING

5-1. Packing method

All switches are packed into IC tubes as an inner packing unit, then ten IC tubes are bundled together with rubber bands. Length of IC tube: 560 mm. Thickness of IC tube: 0.5mm. Quantity per IC tube is 54pcs. Quantity per bundle is 540pcs.

5-2. Information on label (stuck to each bundle of IC tubes)

- | | |
|----------------|-----------------|
| (1) Part NO. | (2) Description |
| (3) Lot NO. | (4) Quantity |
| (5) Tester NO. | (6) P.O. NO. |
| (7) QC stamp | (8) Date |

	NO.	A30942 A1012021	PAGE 3/3
7D11 SERIES SPECIFICATION	Edition	3	

6. MATERIAL LIST

NO.	Part	Materials	Colour & Plated
1	Case (Standard)	PBT glass reinforced nylon	Blue
2	Case (Tropical)	Pa66 glass reinforced nylon	Black
3	Slider	PA46 glass reinforced nylon	Ivory
4	Terminals	Brass	Au 3 μ " , over Ni 40 μ "
5	Fixed contact	Brass	Au 3 μ " , over Ni 40 μ "
6	Movable contact	Becu	Au 5 μ " , over Ni 40 μ "

7. DRAWING

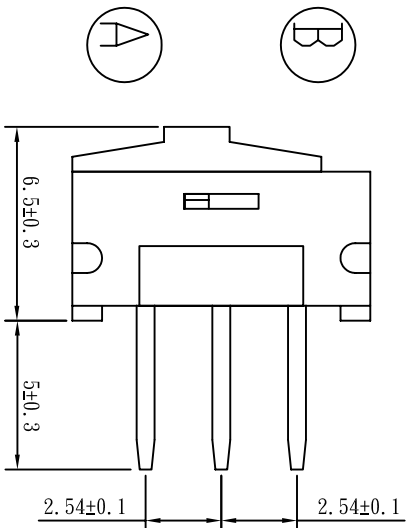
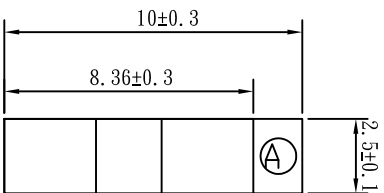
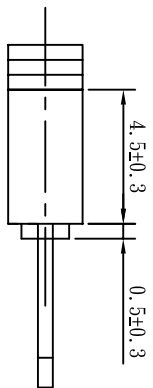
Switch dimensions: see attached drawing.

Circuit diagram: see attached drawing.

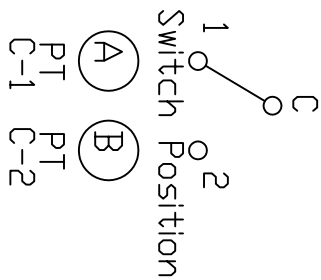
P.C.B. layout diagram: see attached drawing.

7D11-PCAE DIMENSIONS

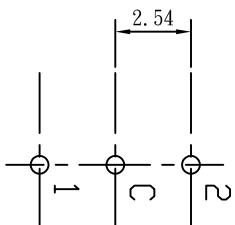
Units: mm



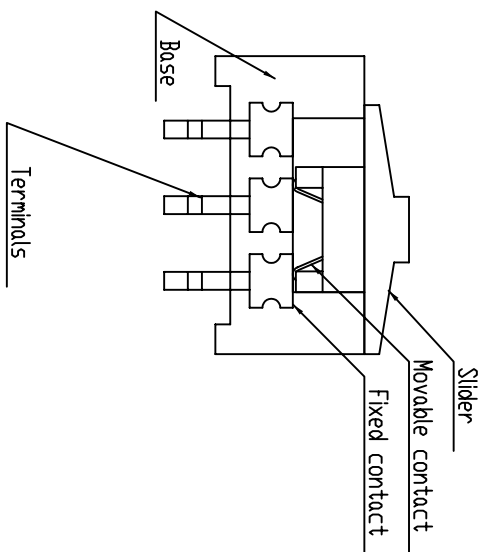
CIRCUIT DIAGRAM



P.C.B. LAY OUT

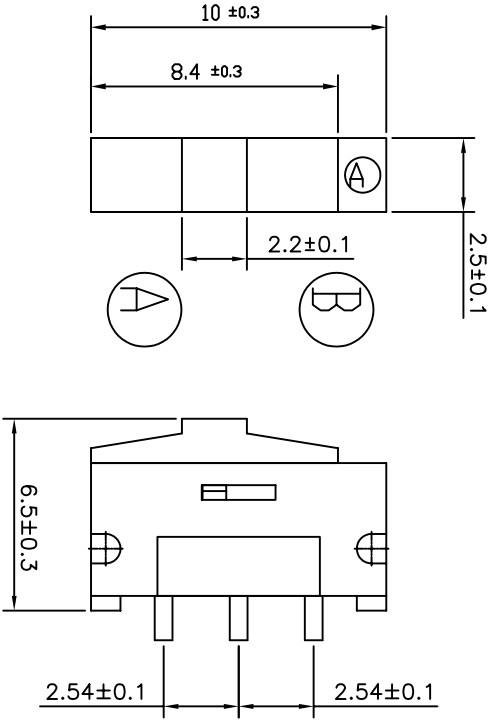
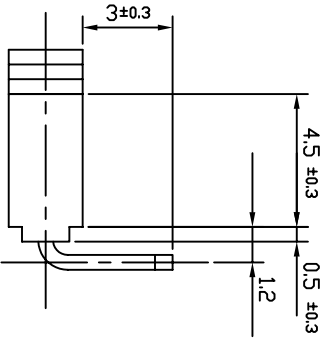


CONSTRUCTION

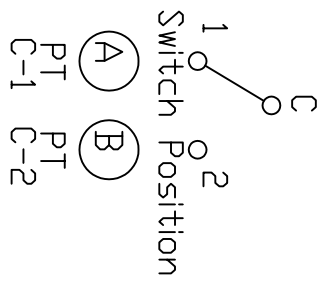


NO.	DETAILS	ALTERED BY	DATE	NORMAL TOLERANCE		PART NUMBER	7D11-PCAE	UNIT	MM (INCH)	PART NAME	
				RANGE	TOLERANCE						MM (INCH)
				0 - 1	±0.03	MATERIAL	-----	SCALE	4 : 1	ESP1000A	
				1 - 4	±0.05	CHECK	DESIGN	QUANTITY	-----	FILE NAME	
				4 - 16	±0.07			PROCESSING	-----	ASSEMBLY NUMBER	A1012021-1
				16 - 63	±0.1			PROJECTION		SURFACE TREATMENT	-----
				63 - 250	±0.2						
				250 - 1000	±0.3						

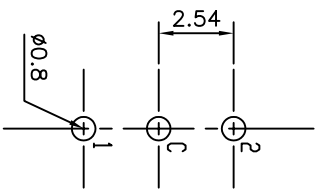
7D11-H9AE DIMENSION Unit: mm



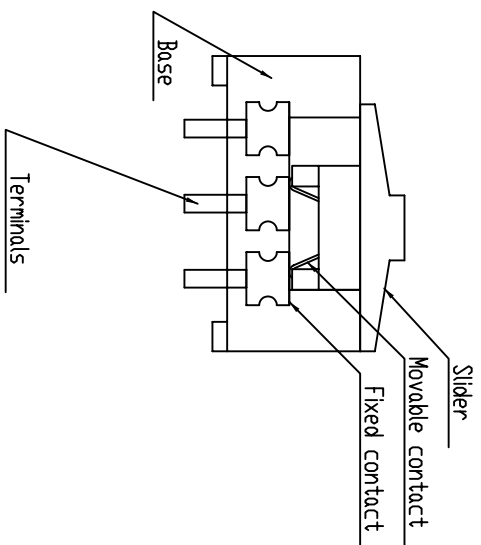
CIRCUIT DIAGRAM



P.C.B. LAY OUT



CONSTRUCTION



NO.	DETAILS	ALTERED BY	DATE	NORMAL TOLERANCE		PART NUMBER	UNIT	MM(INCH)	PART NAME
				RANGE	TOLERANCE				
				0 - 1	±0.1	MATERIAL	SCALE	4 : 1	TYPE
				1 - 4	±0.3	CHECK GARY DESIGN H. S. W DRAWN H. S. W	QUANTITY	---	FILE NAME
				4 - 16	±0.5		PROCESSING	---	ASSEMBLY NUMBER
				16 - 63	±0.8		PROJECTION	---	7D11-H9AE
				63 - 250	±1.0				SURFACE TREATMENT
