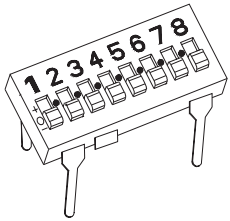




## SERIES DBG-DNG

- Tri-state Type
- Through hole & surface mount models



## CHARACTERISTICS

- Tristate codes for larger N° of combinations
- Bottom sealed to prevent flux contaminations during wave soldering
- UL94V-0 Materials
- Gold plated contact to ensure low contact resistance and tin plated terminals to prevent contamination during soldering
- Twin contacts designed to ensure stable contact

## SPECIFICATIONS

**Rating:** Switching 25mA, 24 @VDC  
Non Switching 100 mA@ 50 VDC

**Contact Resistance:** 50 m Ω Max at initial  
100 m Ω Max after life test

**Insulation Resistance:** 1,000 M Ω @100VDC

**Dielectric Strength:** 500 VDC, 1 Min

**Capacitance between adjacent switches:** 5pF Max

**Temperature:** Operating -25°C to + 70°C  
Storage -40°C to +85°C

**Life:** 2,000 Operation

**Operation force:** 800g Max

**Humidity:** 95% RH @ 40°C for 96 Hours

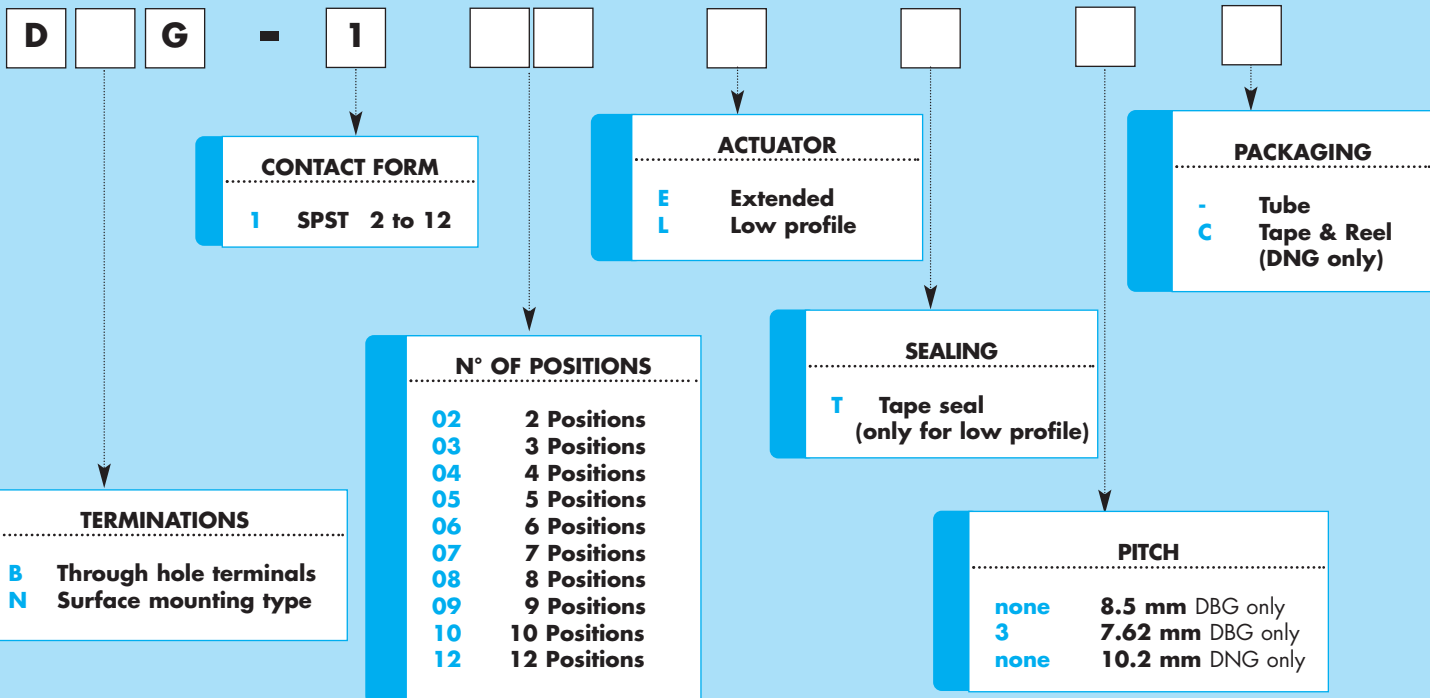
**Vibration:** per Mil - STD-202F, method 204D

**Solderability:** After flux 230 ±5°C for 5 ±0.5 secs 95% coverage

**Soldering Heat:** 260 ±5°C for 5±1 secs

**Reflow Soldering Heat for SMT:** 230 ±5°C for 30 secs

## HOW TO ORDER

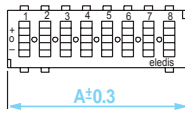


DIP SWITCHES

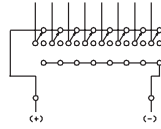
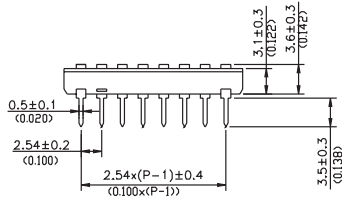


## SERIES DBG

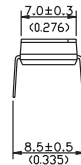
### TERMINATIONS AND DIMENSIONS



**B**  
Through hole

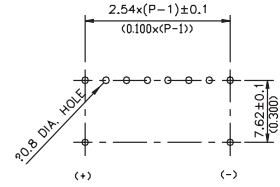


Pitch  
none

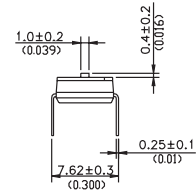


**L** Low profile Actuator

### P.C.B. LAYOUT (Top view)



Pitch  
**3**



**E** Extended Actuator

Position	2	3	4	5	6	7	8	9	10	12
<b>A</b> Dim	6.68	9.22	11.76	14.3	16.84	19.38	21.92	24.46	27.00	32.08

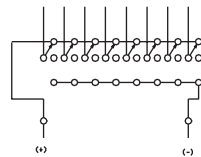
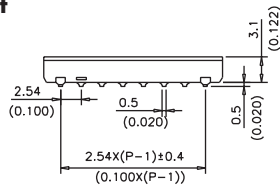
Part N° shown: DBG-108LT

## SERIES DNG

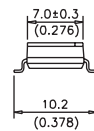
### TERMINATIONS AND DIMENSIONS



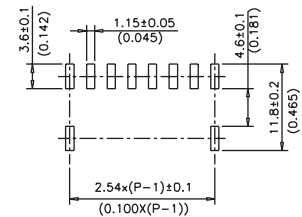
**N**  
Surface Mount



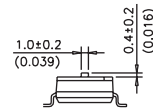
**L** Low profile Actuator



### P.C.B. LAYOUT (Top view)



**E** Extended Actuator



Position	2	3	4	5	6	7	8	9	10	12
<b>A</b> Dim	6.68	9.22	11.76	14.3	16.84	19.38	21.92	24.46	27.00	32.08

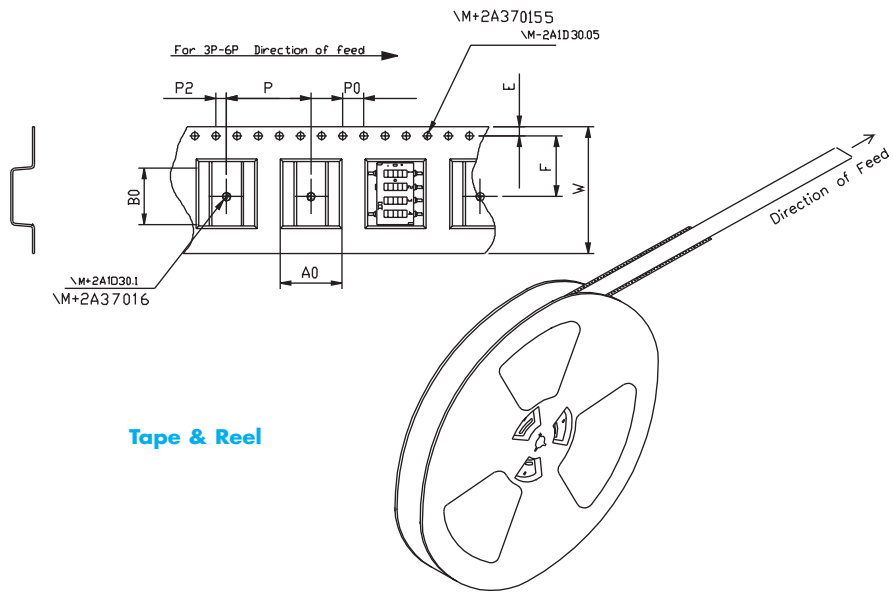
Part N° shown: DNG-108LT



SERIES DBG-DNG

PACKAGING

LABELLING  
(on packaging)



Tape & Reel

The label tray gives full information on the products contained.

P/N: EL.FNC.: Q.TY: DATE CODE:	
Made in Taiwan	
Remarks	

A Bar code indicating Model, Quantity, Date Code enables easy traceability.