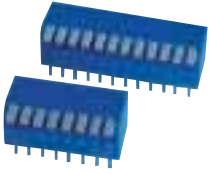


## SERIES DE

### New Design Piano Type



## CHARACTERISTICS

- High Pressure wiping
- Excellent Detent
- UL high Temp. Material
- Gold Plated Contact
- Water Cleaning allowed
- New Design

## SPECIFICATIONS

**Rating:** 25 mA max @ 24VDC max  
**Contact Resistance:** 50 mΩ max initial  
**Insulation Resistance:** 100 MΩ min @ 500V  
**Dielectric strength:** 500 VDC for 1 min.  
**Temperature:** Operating -20°C to +85°C  
**Operating Force:** max 1000 Gr  
**Operating Life:** 2.000 operations per Switch Pos  
**Contact Areas:** Gold Plated  
**Terminal:** Tin Plated  
**Soldering specifications:** **Manual** 350°C for max 3 sec, **Reflow** max 240°C for max 10 sec.

## PACKAGING

**Type of Packaging:** Tube  
*(Actuator in Off Position)*

## HOW TO ORDER

**D E**



### N° OF POS.

<b>02</b>	<b>2 Pos</b>	<b>07</b>	<b>7 Pos</b>
<b>03</b>	<b>3 Pos</b>	<b>08</b>	<b>8 Pos</b>
<b>04</b>	<b>6 Pos</b>	<b>09</b>	<b>9 Pos</b>
<b>05</b>	<b>5 Pos</b>	<b>10</b>	<b>10 Pos</b>
<b>06</b>	<b>6 Pos</b>	<b>12</b>	<b>12 Pos</b>

### ACTUATOR

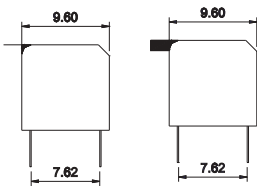
- E** Extended
- L** Low profile

### SEALING

- None
- T** Tape Seal

## DIMENSIONS

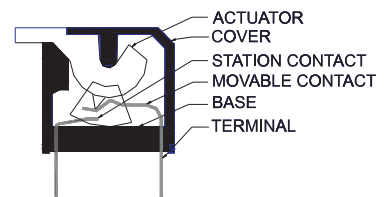
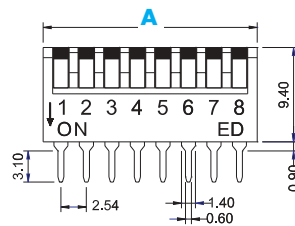
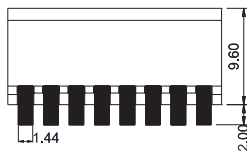
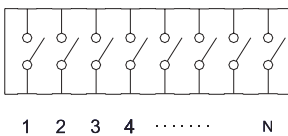
### Actuator: E or L



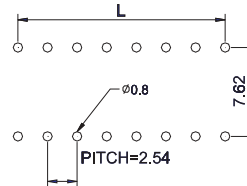
### Part N° shown

**DE08-L DE08-E**

### Contact Form



### P.C.B. Layout T/H



## Dimensions & Packaging

Positions	2	3	4	5	6	7	8	9	10	12
<b>A</b> in mm	6.08	8.62	11.60	13.70	16.24	18.78	21.32	23.86	26.40	31.48
Qty/Tube	85	60	40	38	32	27	24	21	20	16