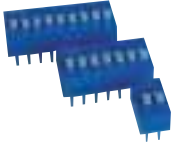


SERIES DF

New Design Box Type



CHARACTERISTICS

- High Pressure wiping
- Excellent Detent
- UL high Temp. Material
- Gold Plated Contact
- Water Cleaning allowed
- New Design

SPECIFICATIONS

Rating: 25 mA max @ 24VDC max
Contact Resistance: 50 mΩ max initial
Insulation Resistance: 100 MΩ min @ 500V
Dielectric strength: 500 VDC for 1 min.
Temperature: Operating -20°C to +85°C
Operating Force: max 1000 Gr
Operating Life: 2.000 operations per Switch Pos
Contact Areas: Gold Plated
Terminal: Tin Plated
Soldering specifications: **Manual** 350°C for max 3 sec, **Reflow** max 240°C for max 10 sec.

PACKAGING

Type of Packaging: Tube
(Actuator in Off Position)

HOW TO ORDER

D F

—

□

□

N° OF POS.

01	1 Pos	07	7 Pos
02	2 Pos	08	8 Pos
03	3 Pos	09	9 Pos
04	6 Pos	10	10 Pos
05	5 Pos	12	12 Pos
06	6 Pos		

ACTUATOR

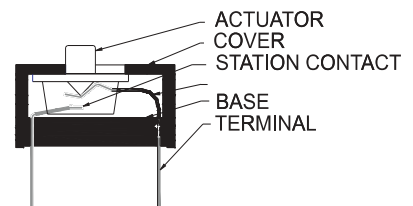
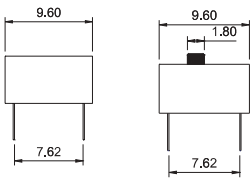
- E** Extended
- L** Low profile

SEALING

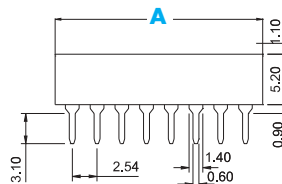
- None
- T** Tape Seal

DIMENSIONS

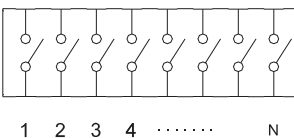
Actuator: E or L



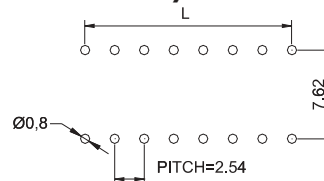
Part N° shown
DF08-L **DF08-E**



Contact Form



P.C.B. Layout T/H



Dimensions & Packaging

Positions	1	2	3	4	5	6	7	8	9	10	12
A in mm	3.54	6.08	8.62	11.16	13.70	16.24	18.78	21.32	23.86	26.40	31.48
Qty/Tube	144	85	60	40	38	32	27	24	21	20	17