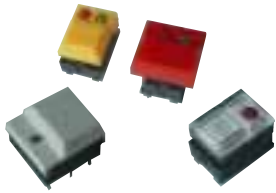


SERIES KE

Piano Key Type



CHARACTERISTICS

- Classic Piano-Key design
- With or w/o LED
- Large and small Keys
- SPDT & SPST
- Multi-design features

PACKAGING

Qty/tray: 100
Type of Packaging: Tray

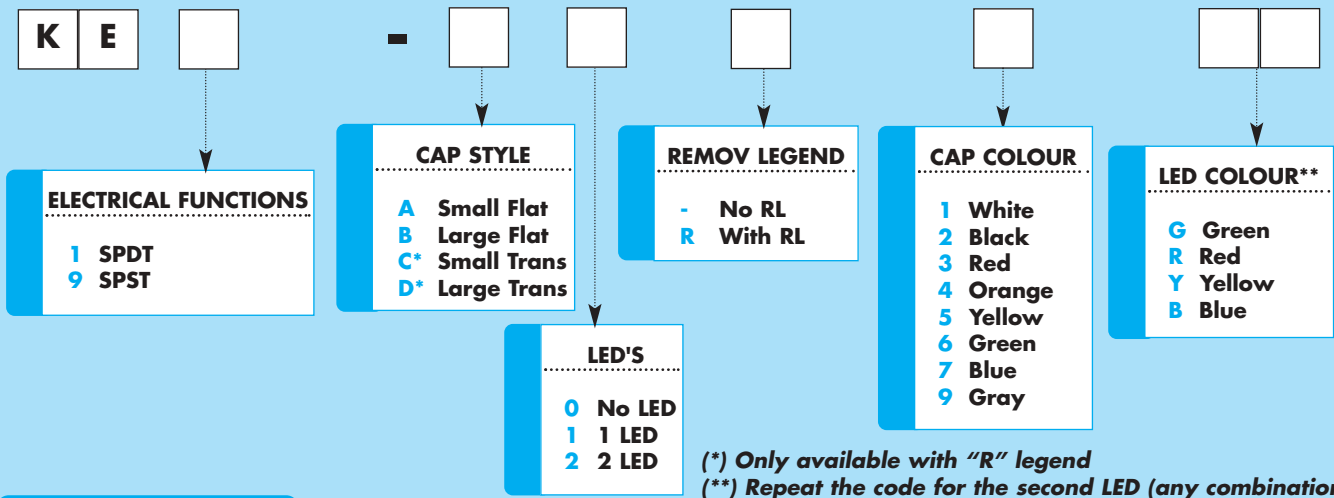
SPECIFICATIONS

Rating: Switching 50 mA @ 12VDC max
Contact Resistance: 50 mΩ max initial*
Insulation Resistance: 100 MΩ min @ 500V
Temperature: Operating +10°C to +60°C
Operating Life: 500.000 operations**
Operating Force: 170 ±50 gf
Soldering specifications: 250°C for 5 secs

* 100 mohm for SPST contact

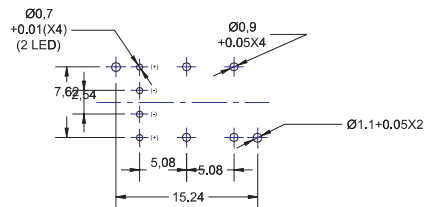
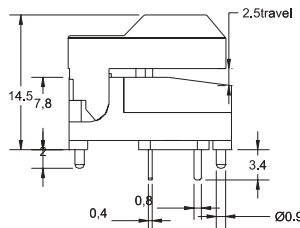
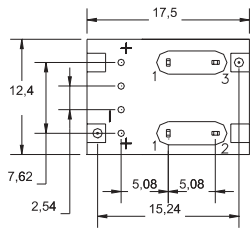
**100.000 operations for SPST

HOW TO ORDER



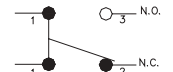
DIMENSIONS

1 SPDT

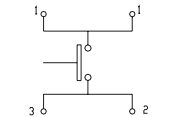


P.C.B. Layout

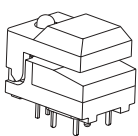
1 SPDT



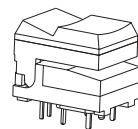
9 SPST



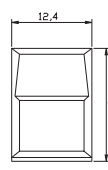
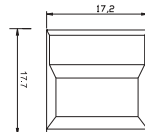
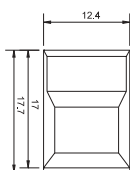
CAP STYLES



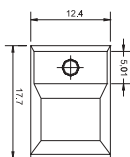
A & B Style



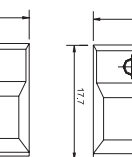
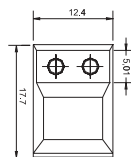
C & D Style



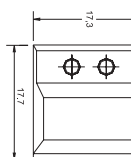
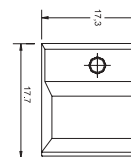
C Style



A Style



B Style



D Style

Removable Legends

(under transparent overlay C & D type only)

