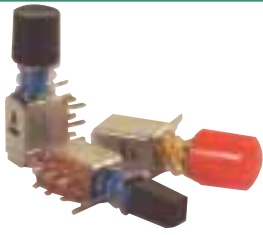


SERIES PB



CHARACTERISTICS

- Mom or Push-Push Operation
- 3.2 mm foot-print
- SPDT or DPDT
- Multi-Mounting features
- Add-on front Cap

SPECIFICATIONS

Rating: 300 mA max@30VDC
Contact Resistance: 20m Ω max initial
Insulation Resistance: 100 MΩ min @ 500V
Temperature: Operating -10°C to +60°C
Operating Life: 10.000 operations
Operating Force: 300±200Gf

HOW TO ORDER



MOUNTING STYLE

- A** No Bracket
- B** Front Flange
- G** U Bracket

N° OF POLES

- 1** SPDT
- 2** DPDT

TERMINALS

- P** PCB
- R** 90° Front
- Y** 90° Reverse
- W** Solder tag

LOCK

- L** Lock
- N** No lock

CAP

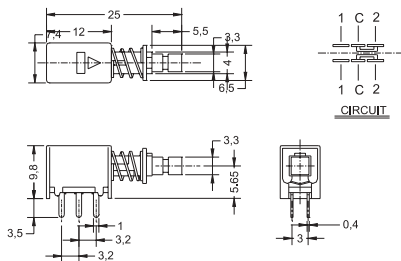
- No Cap

ELECTRICAL FUNCTIONS

- 2** 2 Positions

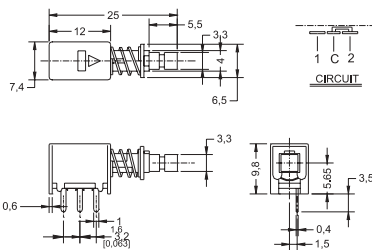
MOUNTING STYLE

A No Bracket



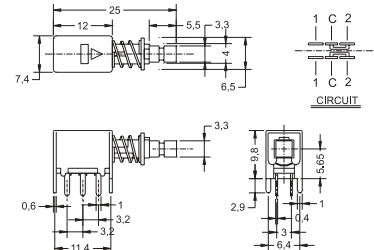
Part N° shown: **PBA22-Px**
(define x)

B Front Flange



Part N° shown: **PBG12-Px**
(define xx)

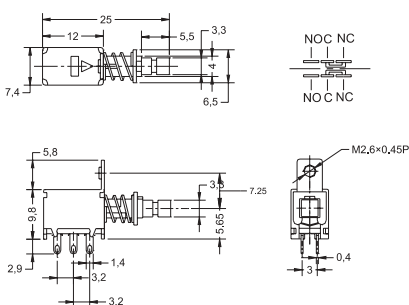
G U Bracket



Part N° shown: **PBG22-Px**
(define x)

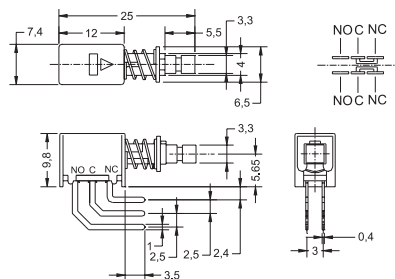
TERMINALS & DIMENSIONS

P Terminals

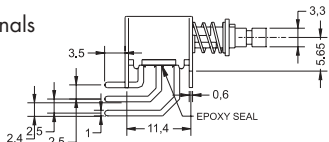


Part N° shown: **PBB22-Px**
(define x)

R Terminals



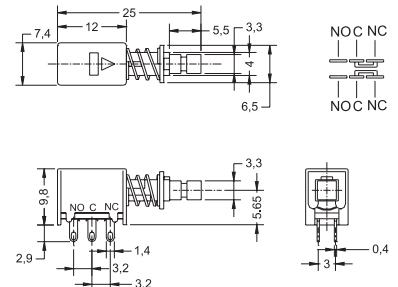
Y Terminals



Part N° shown: **PBA22-Yx**
(define xx)

Enquire for more options of terminals and mounting

W Terminals



Part N° shown: **PBA22-Wx**
(define xx)