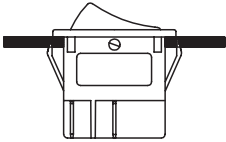




SERIES R5

- Multifunction Power Switches
- 10 to 15 Amps



Double Pole

AGENCY APPROVALS



CHARACTERISTICS

- DPDT Rocker Switch
- Miniature 25 x 33 mm Bezel
- Snap-in Mounting
- Illuminated and Coloured Rockers

MATERIALS

Housing: PA 66
Rocker: PC
Contacts: Silver Alloy
Terminals: Brass, Silver plated

SPECIFICATIONS

Contact Rating: 10A 250VAC, 15A 250VAC
Contact Resistance: <20 mohm
Insulation Resistance: 10⁹ Ohms min (5000 Volts across open contacts)
Electric Life: 10.000 make & brake cycles @ full load
Mechanical Life: 30.000 make & brake cycles

TEST SPECIFICATIONS

High Volt Resistance: >1500 Volts for 1 Min
Ambient temperature: Terminal side -20, +85°C, Actuating side -20, +55°C
Storage temperature: -30, +80°C
Humidity: Max 85°C
Actuating Force: 4 - 8 N (depending on switch function)
Flammability: UL94 V-2

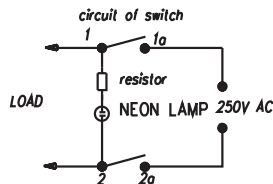
HOW TO ORDER

R	5	-							
N° OF POLES		RATING		ROCKER COLOUR		TERMINALS		APPROVALS	
2	DPDT	6	10A @ 250 VAC	C1	White	F	Faston	A	EU + USA
6	DPST	7	15A @ 250 VAC	C2	Black (Std)				
ELECTRICAL FUNCTIONS		BODY COLOUR		C3	Red	MARKING		LAMP	
1	on none on	B	Black	C4 (Δ)	Orange	E	No markings	0	No Lamp
2	on none (on)	G (Δ)	Gray	C9 (Δ)	Gray	01	On - Off	1	125 VAC
3	on off on	W (Δ)	White	T3	Red Trsnp	Other markings please enquire		2	250 VAC
4	(on) off (on)			T5	Amber Trsnp			3	12 VDC
5	on off (on)			T6	Green Trsnp			Only with on-off switch	
9	on none off								
A	off none (on)								
B	on none (off)								

(Δ) Min qty required
 Water - Resistant Cap Available, Please Enquire

POWER SWITCHES

Circuits for switch R569 with lamp



Z	Y	X
0.7~1.25	22.2~22.3	30.0~30.2
1.25~2.0	22.2~22.3	30.2~30.4
2.0~3.0	22.2~22.3	30.6~30.8

