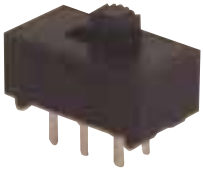


SERIES SL16



CHARACTERISTICS

- All plastic Housing
- Agency approvals
- Single and Double pole
- Horiz & Vert Mounting

SPECIFICATIONS

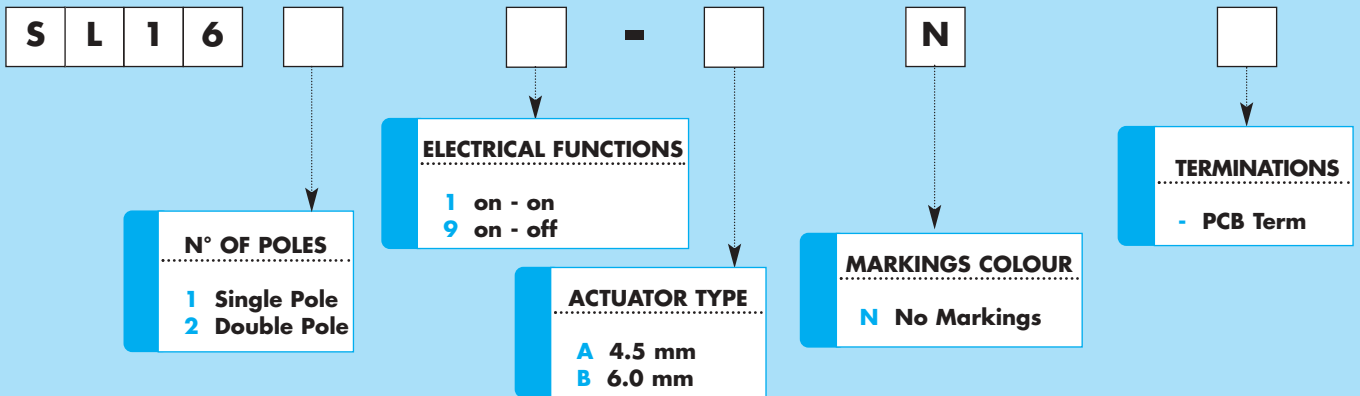
Rating: 10 A @ 250VAC μ T85/55
Contact Resistance: 20 m Ω max
Insulation Resistance: 100 M Ω min @ 500V
Dielectric Strength: 1000 VAC for 1 min

SPECIFICATIONS

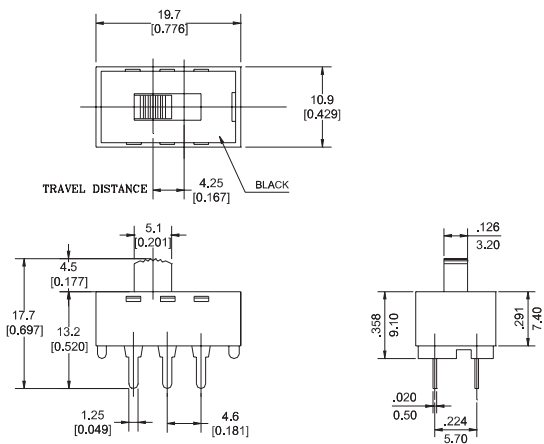
Case: PBT UL 94V-2 min
Actuator: PBT, UL 94V-2 min
Spring: Steel
Moving Contact: Silver plated Copper
Terminals: Silver plated Copper



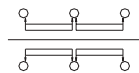
HOW TO ORDER



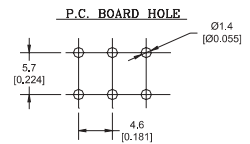
DIMENSIONS



Diagram



P.C.B. layout



Part N° shown: SL16-21BN