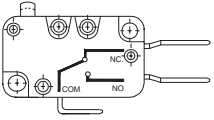




SERIES VT

- Micro switches **single pole**
- **1+6 Amps:**



AGENCY APPROVALS

IP67 In conformity with:

- EN 60529: 1991
- IEC 529: 1989

SPECIFICATIONS

Contact Resistance: 15 mΩ max. initial
Insulation Resistance: 100 MΩ min. @ 500VDC
Electrical life: 100,000 operations min. full load
Mechanical life: 10,000,000 operations min.

MATERIALS

Housing: PBT
Contacts: AgCdO₂
Terminal: COPPER
Spring: SWPB

TEST SPECIFICATIONS

Dielectric strength: between terminals of same polarity AC 1,000V (50/60Hz 1 min.).
 Between each terminal and non-current-carrying rind parts AC2000V (50/60Hz 1 min.)
Ambient temperature: -20~+85°C

HOW TO ORDER

V T

SERIES

1 6

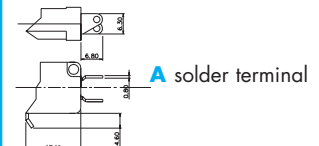
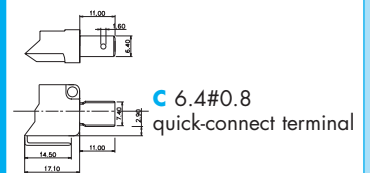
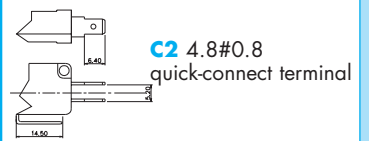
RATING

16 15A; 125/250VAC
 (UL 1054)
16(4)A; 125/250VAC
 (IEC 1058-1)

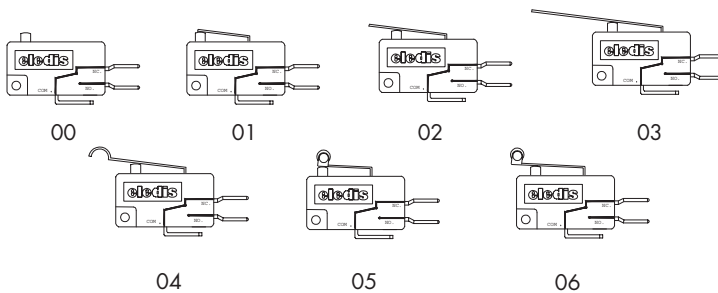
CONTACT

- 1 1NC & 1NO**
- 2 1NC**
- 3 1NO**

TERMINAL



ACTUATOR TYPE

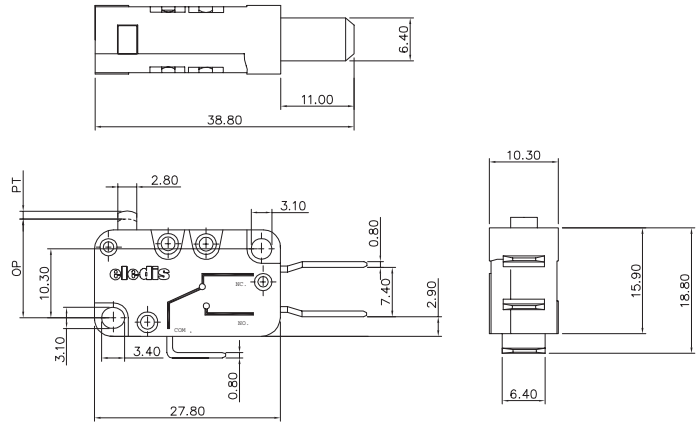




SERIES VT

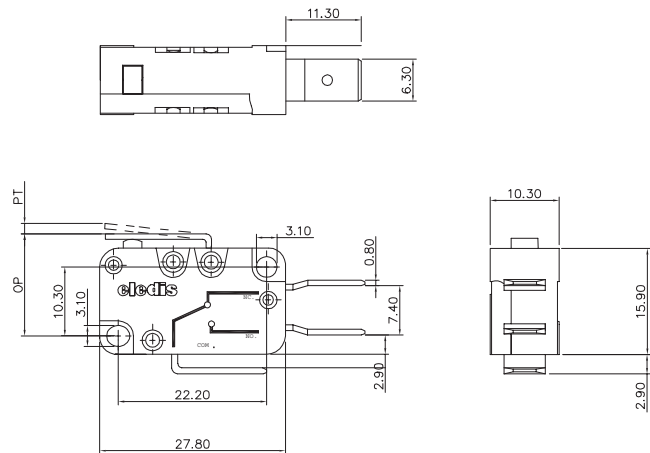
VT □□001C

Operating Force (OF) max:	250g
Pretravel (PT) max:	1.2 mm
Overtravel (OT) min:	1.0 mm
Movement Differential (MD) max:	0.3 mm
Operating position (OP):	14.7±0.4 mm



VT □□011C

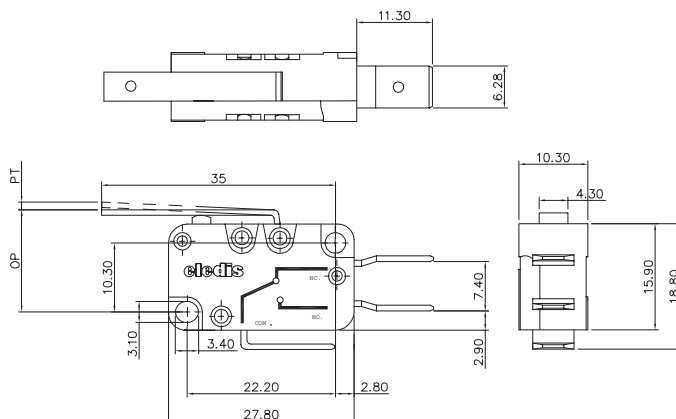
Operating Force (OF) max:	250g
Pretravel (PT) max:	1.4 mm
Overtravel (OT) min:	1.0 mm
Movement Differential (MD) max:	0.3 mm
Operating position (OP):	15.2±0.5 mm



SERIES VT

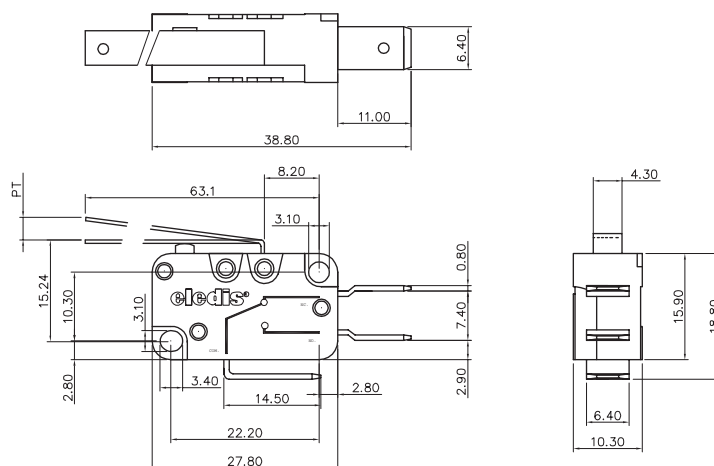
VT □ □ 021C

Operating Force (OF) max:	100g
Pretravel (PT) max:	2.4 mm
Overtravel (OT) min:	1.6 mm
Movement Differential (MD) max:	0.8 mm
Operating position (OP):	16±1.2 mm



VT □ □ 031C

Operating Force (OF) max:	60g
Pretravel (PT) max:	7 mm
Overtravel (OT) min:	4 mm
Movement Differential (MD) max:	2.0 mm
Operating position (OP):	15.2±2.6 mm

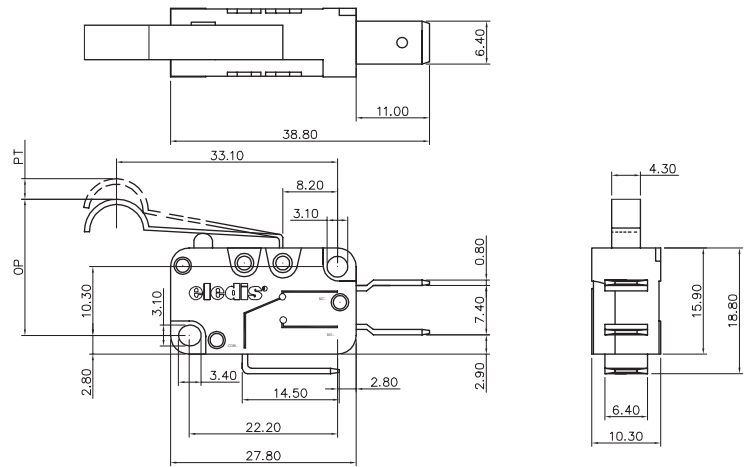




SERIES VT

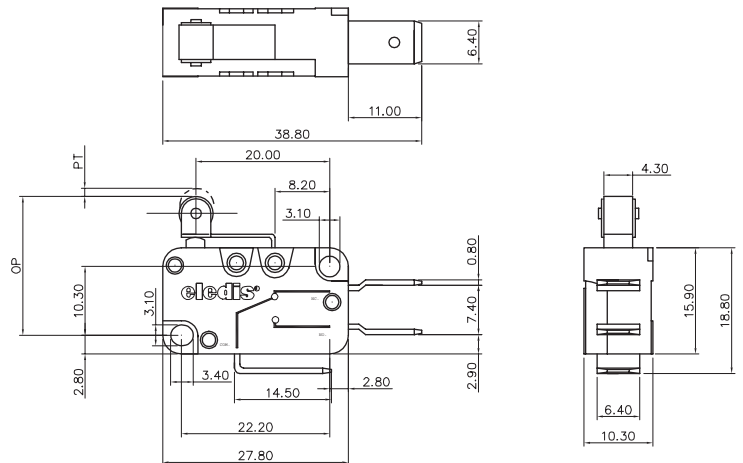
VT □□041C

Operating Force (OF) max:	150g
Pretravel (PT) max:	3 mm
Overtravel (OT) min:	1.6 mm
Movement Differential (MD) max:	1.0 mm
Operating position (OP):	20.4±1.2 mm



VT □□N051C

Operating Force (OF) max:	250g
Pretravel (PT) max:	1.2 mm
Overtravel (OT) min:	1.0 mm
Movement Differential (MD) max:	0.4 mm
Operating position (OP):	20.8±0.6 mm



VT □□N061C

Operating Force (OF) max:	120g
Pretravel (PT) max:	3.5 mm
Overtravel(OT)min:	1.7 mm
Movement Differential (MD) max:	1.0 mm
Operating position (OP):	20.8±1.2 mm

